



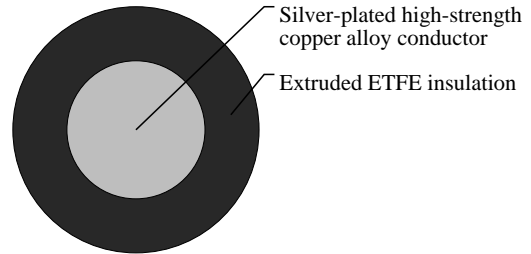
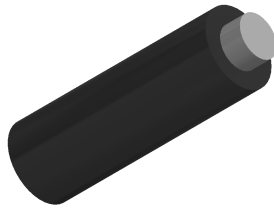
# Caledonian

Military Cables

[www.caledonian-cables.com](http://www.caledonian-cables.com)

[marketing@caledonian-cables.com](mailto:marketing@caledonian-cables.com)

## MIL-W-81822/13 Type C 1C24AWG



## APPLICATIONS

These extruded ETFE (polyvinylidene fluoride) insulated single-core MIL-W-81822/13 cables are used for aerospace and other applications where light weight, tight jacket diameter tolerances and mechanical toughness are required. ETFE insulation also provides exceptional resistance to radiation and chemicals.

## VOLTAGE RATING

300V

## CABLE CONSTRUCTION

Conductor: Silver-plated high-strength copper alloy

Insulation: Extruded ETFE

## COLOUR CODE

MIIL-STD-104(See page 65)

## PHYSICAL AND THERMAL PROPERTIES

Temperature Range: -55°C to 150°C

## DIMENSION AND PARAMETERS

AWG Size	Conductor Stranding	Conductor Diameter	Conductor Diameter	Overall Diameter (min.)	Overall Diameter (min.)	Overall Diameter (max.)	Overall Diameter (max.)	Approx. Weight	Max. Resistance at 20°C
		in	mm	in	mm	in	mm	LBS/MFT	OHMS/MFT
24	Solid	0.0201	0.511	0.0325	0.826	0.0355	0.902	1.7	31